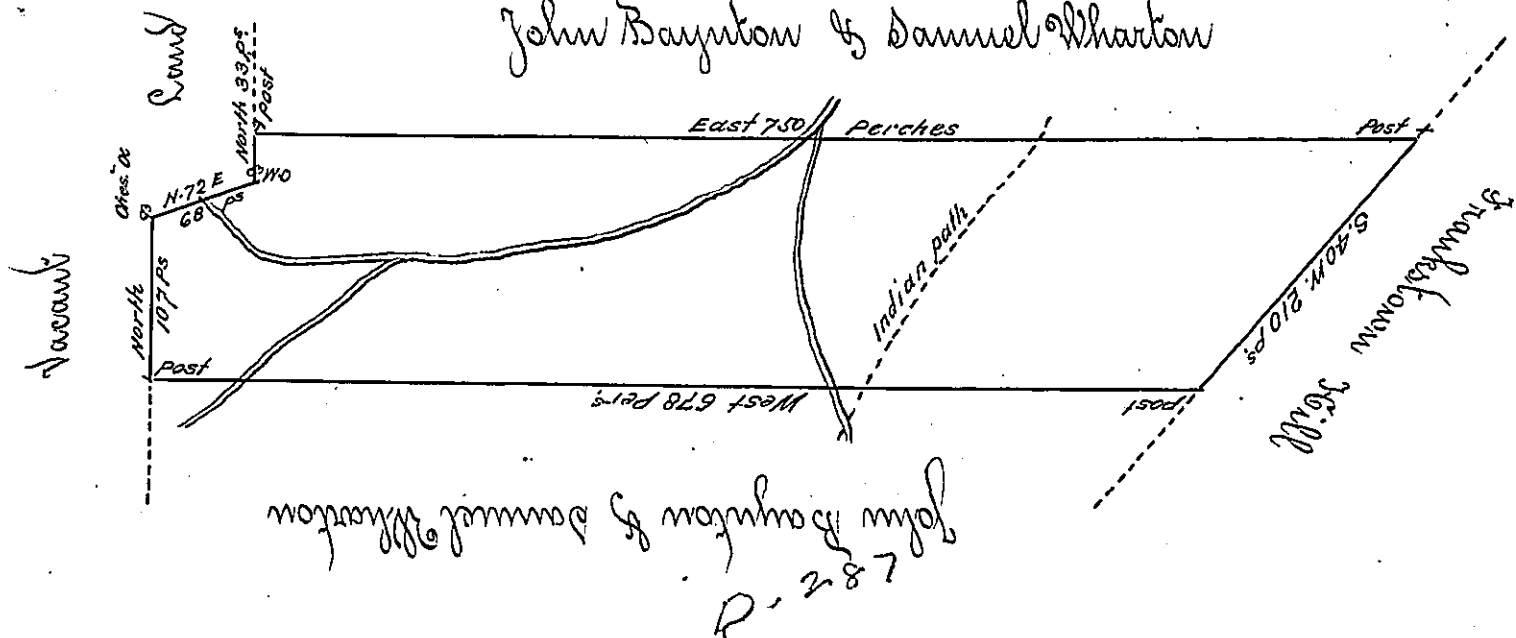


Pa 299

Pa 300

John Baynton & Daniel Wharton



A Draught of a Tract of Land called the two Runs situate on the Indian Path leading to the Great Island in the County of Cumberland containing six hundred and ninety one acres and the usual allowance of six acres per cent for Roads to be surveyed for John Baynton and Daniel, in pursuance of a Warrant dated the 28th July 1766.

To John Lukens Esq: Survey: Genl
P Richard Lea Dep^y Survey:

IN TESTIMONY that the above is a copy of the original remaining on file in the Department of Internal Affairs of Pennsylvania, made conformably to an Act of Assembly approved the 16th day of February, 1833, I have hereunto set my Hand and caused the Seal of said Department to be affixed at Harrisburg, this eleventh day of January 1904.

Francis P. Rowen
Secretary of Internal Affairs.